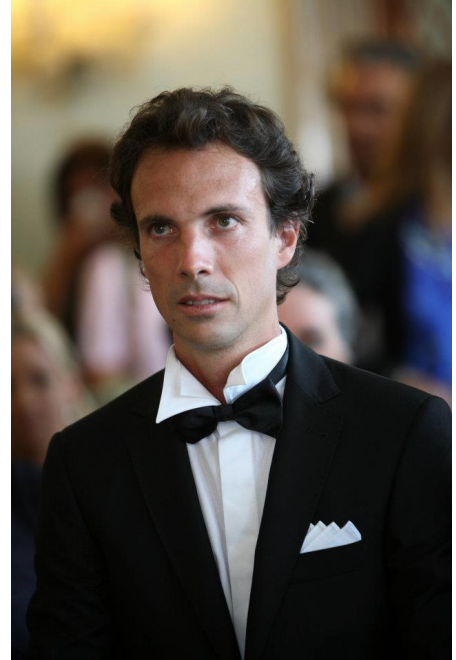




EMANUELE SARI



He graduated from the scientific high school in 1995 and immediately after he started to learn how to work with mosaic and to develop his own style and technique; he was then trained at the Berengo Fine Arts gallery in Venice from 1997 to 2001. Creator, owner and founder of the Emanuele Sari art studio since 2002, where 7 to 20 people currently collaborate with the artist, depending on the quantity of projects. Sari's preferred medium of expression is contemporary mosaic, which he creates with glass, marble, resins, stones and various materials.

He has been creating his works for more than 15 years using mainly glass and a technique called "direct", which consists of gluing the tiles directly onto the support so that the final result is made more "alive" by the reflection of light. To create his works, he almost exclusively uses glass produced in Venice: Venetian enamels and gold leaf from the historic Orsoni furnace, murrine produced by Effetre in Murano, and a few special pieces for shading from Morassutti Mosaici in Spilimbergo. Over time, instead of using ready-made tiles on the market, the artist began to model the components himself, giving a new vibrancy to his figures.

This innovative technique is used to create copies of paintings and portraits of comic books' characters and celebrities: from Lupin to the Joker, from Klimt to Modigliani, from Jimi Hendrix to Freddie Mercury.

From 1997 to 2001, he participated in important exhibitions all over the world, including Miami Art fair, Stockholm Art fair, Ar.Co. Madrid, Wien Art fair, Paris Art fair and many others, in almost all European capitals. In spring 2004 he exhibited his works in a 1-week solo exhibition at the Palazzo delle Prigioni in S.Marco, Venice.

Cris Contini Contemporary

London | Milano | Bruxelles

w. www.criscontinicontemporary.com | e. info@criscontinicontemporary.com
[@criscontinicontemporary](https://www.instagram.com/criscontinicontemporary) | [#criscontinicontemporary](https://www.facebook.com/criscontinicontemporary)



Since 2005, his works have been exhibited at the best art galleries in Venice (New Murano Gallery, Schiavon art team) and around the world.

Notable collaborations include Warner Bros, Mediaset, Timothy Google (Ceo of Yahoo). Collectors include Rod Stewart, Arnon Milchan (Hollywood film producer and one of the world's biggest art collectors), Thomas Muster (1995 World Tennis Champion), gallerists and collectors from all over the world, especially from Dubai, Russia and the USA.

In 2016, he realised (thanks to the approval of Mediaset, which holds the rights in Italy) some mosaic works of the famous anime '*Lupin*' with the supervision of '*Monkey Punch*', the Japanese cartoonist of such characters, attracting the attention of the local and foreign press.

In 2017, the municipality of Venice acquired his work '*Corto Maltese*' by placing it in the Forte Marghera in Venice.

The artist recently designed a mosaic commissioned by AC Milan that pays homage to Silvio Berlusconi, the team's historic president; the work will soon be on permanent display at the Mondo del Milan Museum in Milan. For Puma, on the other hand, Sari created a second mosaic featuring the logos of the team and the famous sports brand.

In anticipation, there is an exhibition in conjunction with the Venice Biennale 2024 at the renowned Vetri di Murano restaurant and a possible future collaboration with Warner Bros. to create some mosaics inspired by its iconic characters.

Cris Contini Contemporary

London | Milano | Bruxelles

w. www.criscontinicontemporary.com | e. info@criscontinicontemporary.com
[@criscontinicontemporary](https://www.instagram.com/criscontinicontemporary) | [#criscontinicontemporary](https://www.facebook.com/criscontinicontemporary)